



# Y'S MEN INTERNATIONAL

Fellowship . Leadership . Impact



*Serving the world since 1922*



# Contents

1. Welcome to a Fellowship of Service, Leadership and Impact p. 4
2. The YMI Legacy p. 5
3. Rooted in Mission, United in Service p. 6
4. Building a Better World Together p. 7
5. International Programmes and Projects p. 8
6. An Organisation Built on Participatory Governance and Accountability p. 9
7. Club Member Commitment p. 10
8. Ten Elements of a Strong YMI Club p. 11
9. Service Without Limits p. 13
10. Becoming a Club Member p. 14



# *A Fellowship of Service, Leadership and Impact*

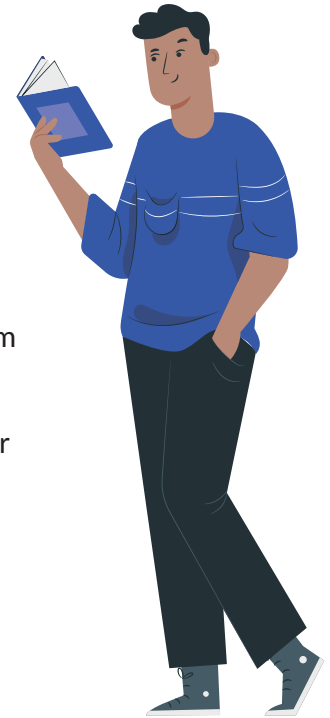
## **WELCOME**

---

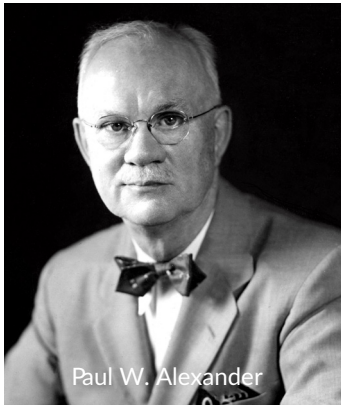
Welcome to Y's Men International (YMI) — a movement that unites people from across the world to serve humanity with compassion and purpose.

Since our founding in 1922, YMI has championed leadership in service, fostered fellowship across borders, and driven action that creates lasting, positive change. We provide opportunities to build lifelong friendships, grow as individuals, and make meaningful contributions to society—working hand in hand with the YMCA to transform communities around the world.

This booklet is designed to help you understand who we are, what we do, and why your membership matters. We invite you to read, reflect, and be inspired to take part in this century-old journey of making the world a better place for all



# The YMI Legacy



The Y's Men movement began in the Toledo YMCA in 1920, when a young attorney and YMCA member Paul William Alexander was asked to develop and lead a social club dedicated to serving the community and supporting the YMCA mission.

The YMCA club model first developed in Toledo quickly inspired other YMCAs across the United States, which began forming similar groups under the name Y's Men's Clubs. Two years later, in 1922, 17 such clubs came together to establish the International Association of Y's Men's Clubs, creating a unified organization dedicated to service, fellowship, and personal growth.

Today, the movement has expanded to more than 82 countries, with over 1,500 clubs dedicated to strengthening communities and fostering global friendship through service.

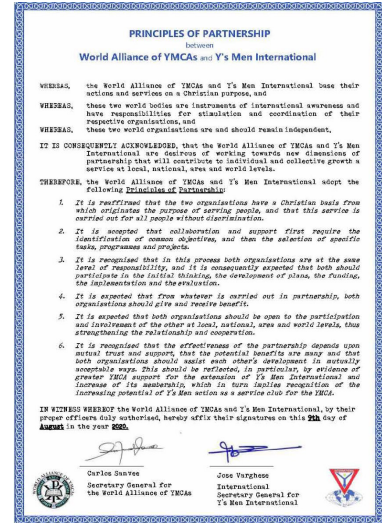
# Rooted in Mission, United in Service

Since its founding in 1922, YMI continues to demonstrate its loyalty to the YMCA by remaining a dedicated mission partner worldwide, striving to achieve the collective vision of a building a better world for all based on the teachings of Jesus Christ, as exemplified by our core values.

## Core Values

- Love – Acting with kindness and devotion and the foundation of all service.
- Compassion – Turning empathy into action.
- Sacrifice – Giving selflessly without expectation.
- Selflessness – Serving with humility and joy.

YMI is inclusive in its membership, leadership and programmes. Anyone sharing our values and inspired by our mission are welcome to join, regardless of their faith, race,



LOVE

COMPASSION

SACRIFICE

SELFLESSNESS

# Building a Better World Together

Our motto, *“To acknowledge the duty that accompanies every right”*, reminds us that every privilege comes with responsibility—that our freedom and blessings must be used for the benefit of others and considering it our duty to the world.



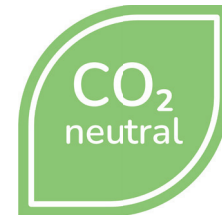
gender, etc.

YMI strives to build a better world through its unique models of fellowship, community service, leadership, and global impact. YMI clubs serve as the foundation for these efforts, bringing members together to foster personal growth, friendship, and meaningful contributions to their communities. Club



# Making a Difference: Key International Programmes

- **Alexander Support Fund (ASF):** Provides grants to support YMCA educational programmes and organisational development activities, including staff training.
- **Building Fellowship (BF):** Fosters international and inter-regional cultural exchange, provides funds for training with a focus on youth leadership development, and targeted environmental initiatives.
- **Endowment Fund (EF):** Ensures the enduring impact and expansion of YMI's mission through strategic investment and prudent portfolio management.
- **Time of Fast (TOF):** Supports YMCA and YMI development projects, primarily in lesser developed nations which align with at least one the United Nations Sustainable Development Goals (SDGs).
- **Roll Back Malaria (RBM):** Works towards the global eradication of the malaria, collaborating with important international platforms, such as the RBM Partnership to End Malaria.
- **Environmental Protection Fund (EPF):** Allocates money for carbon offset projects and other green initiatives with a general focus on solar initiatives.



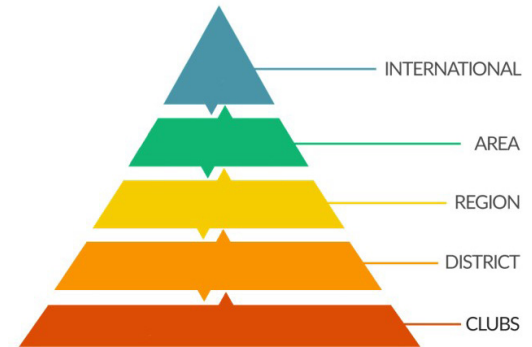
# Built on Participatory Governance and Accountability

Y's Men International operates at multiple levels:

- **Clubs** work autonomously for the betterment of their communities as the heart of our movement.
- **Districts and Regions** support and provide coordination for clubs.
- **Areas** act as administrative partners to the Regions, facilitating the implementation of legislative decisions throughout their jurisdictions.
- **International Headquarters** oversees administrative functions for international operations.

Policies are determined by the Legislative Assembly of Representatives (LARs), with representation from all Areas ensuring every Area has a voice. Decisions are executed by International Executive Committee (IEC). Transparency and integrity are central to YMI's identity. The

organisation operates according to Swiss Association regulations, maintains tax-exempt status, publishes annual reports, audited accounts, makes accessible its various policies within the public domain and prioritises communication with its membership through various forums, including its monthly magazine "YMI World".



# Club Member Commitment

YMI expects dedication from each member to keep the movement strong and vibrant. Our movement thrives when every member takes responsibility and serves with joy.

## Membership expectations:

Every member is expected to:

- Pay annual International, Area, Regional and District dues and local club fees promptly.
- Participate actively in club meetings and service activities.
- Contribute time, skills, and financial support to YMI projects and programmes.
- Promote goodwill, positivity, and fellowship within the club.
- Inspire others through example and enthusiasm.
- Actively engage in District, Regional, Area and International projects and events.

## Membership benefits:

- Meaningful service opportunities
- Fellowship and global networking
- Leadership and personal growth
- Participation in international events



# Ten Elements of a Strong YMI Club



## 1. Active Membership

Maintains at least 15 active, service-minded members.

## 2. Fellowship

Fosters strong fellowship among club members and their families, while also building relationships with members of other YMI clubs.

## 3. Regular Meetings

Meets at least once a month – combining fun, learning, and meaningful engagement.

## 4. Community Service

Conducts regular service activities that positively impact the local community.

## 5. Fundraising

Organises fundraising initiatives to support local and international projects.





## 6. Local Partnerships

Builds collaborations with YMCA and other reputable local organisations to enhance impact.

## 7. Effective Leadership

Encourages and develops leadership that inspires growth and sustains the club's mission.

## 8. Active Participation

Participates in District, Regional, Area, and International YMI activities to strengthen global connections.

## 9. Member Recruitment

Engages in ongoing recruitment to attract new, enthusiastic members to the club.

## 10. Visibility & Communication

Is visible and vocal about the club's activities and impact through regular communication and effective publicity.



# Service Without Limits

At the heart of YMI club members lies the spirit of fellowship & service—

A spirit that transforms charity into compassion, and meetings into movements.

*“To be a Y’s Man has never been predicated upon what a man believes, but upon what he does.” – Paul William Alexander, 1951*

Y’s Men International is not just an organisation; it’s a way of life.

A family united by faith in action, fellowship across borders, and service that transcends generations.

**Join us in building a better world – one act of kindness at a time**



# Becoming a Club Member

## WHO can join?

Anyone who shares the YMI's values and commitment to service can become a club member. Adults aged 18 and above are invited to join YMI-affiliated clubs. For young people between 15 and 30 years old, Youth Clubs provide a vibrant space for leadership, service, and personal growth.

## HOW to join?

Most members join through introduction to a local club. If no club exists nearby, we can assist you in starting a new one with your friends and colleagues. Only five people are needed to charter!

Information on starting clubs and/or becoming a member of an existing club can be found on the international website: [www.ysmen.org/join-us](http://www.ysmen.org/join-us) or by writing to us at directly at [ihq@ysmen.org](mailto:ihq@ysmen.org).





**COME JOIN THE FAMILY!**





*Building an equitable and sustainable world  
through global fellowship and community impact.*

Y'S MEN International  
121 rue de Lausanne  
CH-1202 Geneva  
Switzerland



[www.ysmen.org](http://www.ysmen.org)



[ihq@ysmen.org](mailto:ihq@ysmen.org)